

# 918-87 Assembly Drawing(ANSI/2#)

918-87 (230215) CN



Install 4 pieces of AAA alkaline batteries

⑦ Fix the front and back panel

⑥ Connect the wires (note: Do not pull the wires) ; connect the 2-pin connectors of front panel and back panel (black correspond to black) ; connect the 6-pin connectors of front panel and back panel (black correspond to black)

④ Put the Ø48 shaft into back cover

Assembly steps ① Fix the mortise to the door

Make sure the spring inside the handle hole

⑦ Fix the front and back panel

⑤ Insert the Ø46 shaft into back cover (Note: Groove is downward)

③ Install the striker and striker case on the door frame

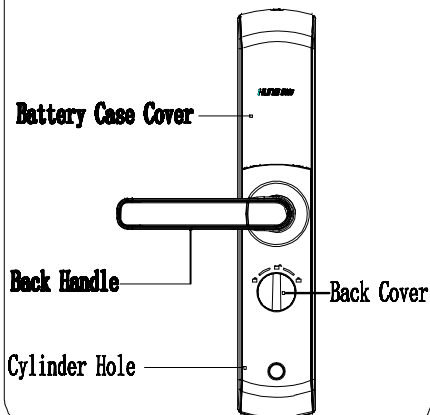
② Fix the cylinder

③ Put the Ø48 shaft into front cover

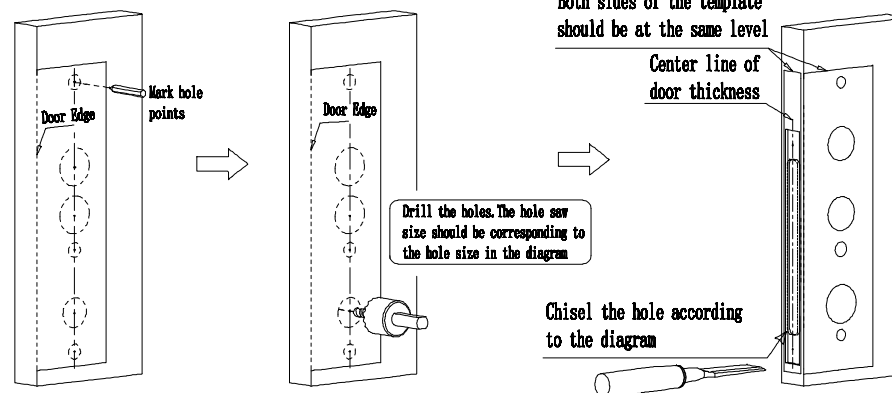
Make sure the spring inside the handle hole

Insert the mechanical key and rotate clockwise to the end, then turn down handle to open the door

## Back Cover



## How To Punch Door Hole



## Front Cover

