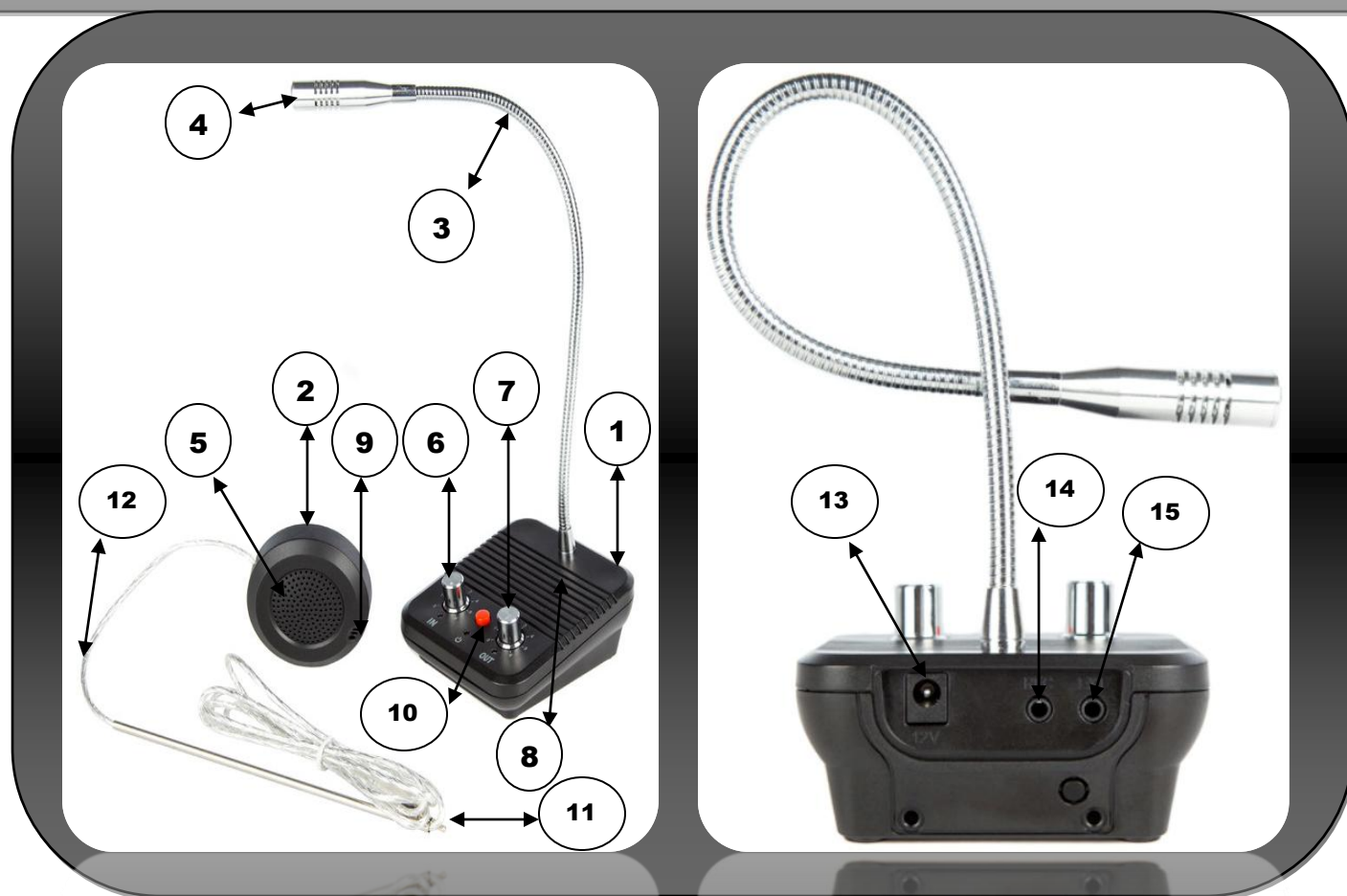


ZDL-350E Customer Service Window Intercom Kit



Device Introduction

The ZDL-350E is a FULL-DUPLEX 2-Way audio communication intercom kit designed for communicating with customers in the other side of a bullet-proof window. Device includes 1-Master + 1-Sub-station that easily set up quickly. Plug-N-Play kit that works right out of the box.

Device Functions & Operating Buttons

1. Master Station With Mic. + Speaker
2. Sub-station With Mic. + Speaker
3. Adjustable Goose-neck Mic. Extension
4. Master Station Microphone
5. Sub-Station Speaker
6. Master Station Speaker Volume Control
7. Sub-Station Speaker Volume Control
8. Master Station Speaker
9. Sub-Station Microphone
10. Device Power On/Off
11. 3.5MM Male Jack To Connect Master

12. 6-Foot Sub-Station Audio Wire
13. AC100 ~ 240 12VDC 1Amp Power Input
14. Recording Output Jack
15. Sub-Station Input – 3.5MM Female Jack

Other Controls [In Master Station Bottom]

16. Master Station Mic. Volume Control
 17. Sub-Station Mic. Volume Control
- Status Lights
Master + Sub-Station IN/OUT Status Lights
Power ON/OFF Status Light

ZDL-350E Customer Service Window Intercom Kit

Device Specification

- Communication Type: Audio [Hands-Free]
- Power Supply: 110 ~ 240 VDC 12V 500mA
- Power Consumption: 500mA
- Speaker Output: Master: 3W
- Microphone Sensitivity: Master: 36-38db / Sub: 58-db
- Ambient Temperature: -22°F ~ 122°F
- Size:
Master: [H] 1.5" X [W] 3.5" X [L] 4.5"
Sub-Station: [W] 2.5" X [H] 2.5" X [T] 0.7"

What's Included In The Package

- 1-ZDL-350E Master Station
- 1-ZDL-350 Sub-Station With 6-Feet 3.5MM Jack Audio Cable
- Sub-Station 3M Mounting Kit
- 1-AC100 ~ 240V 12VDC 500mA Power Supply
- 1-User Operating Instructions

Device Trouble-Shooting

1. Device suddenly stopped working. No sound [Audio] to and from both sides?
 - Check to ensure Device Power is properly connected.
 - Switch device OFF & ON to RESET
 - Device Sub-Station Connector behind the Master Station may be loose. Please push this 3.5MM Male jack in to the female input properly.
2. Echo/Noisy Feed-back suddenly start during communication
 - Keep the Sub-station away from the Master station by few distance
 - Adjust the Master & Sub-station Volume.
3. Master Station speaker sound seem too low
 - Adjust volume with the IN Turn Knob
4. Sub-station speaker sound seem too low
 - Adjust volume with the OUT Turn Knob
5. Sound from Both Master & Sub is distorted
 - You may want to reduce the distance between the Master and the Sub-station.
 - You may want to keep noise level down in the area.
6. Communication from both Master & Sub-station seem too low
 - Flip the Master Station over to adjust both sides Microphone pickup volume.