



Diagram illustrating the components of a ceiling fan assembly, including the motor, blades, and mounting hardware.

- Motor assembly (top left): Labeled  $\times 1$ .
- Blade (top right): Labeled  $\times 1$ .
- Blade bracket (middle left): Labeled  $\times 1$ .
- Blade bracket (middle right): Labeled  $\times 1$ .
- U-bolts (bottom left): Labeled  $\times 2$ .
- U-bolts (bottom right): Labeled  $\times 2$ .
- Washer (bottom left): Labeled  $\times 4$ .
- Washer (bottom right): Labeled  $\times 4$ .
- Washer (bottom right): Labeled  $\times 4$ .
- Washer (bottom right): Labeled  $\times 4$ .

[illegible]

Default IP	Master:192.168.2.66/24 Slave:192.168.2.67/24
Account	admin
Password	admin01

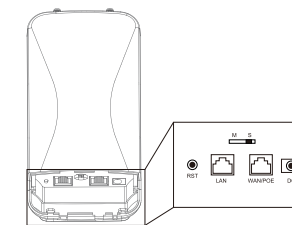
Working frequency	5.150GHz~5.850GHz
TX power	<29dBm(Based on region regulation)
Antenna gain	12dBi(L3)/18dBi(L8)/External antenna(-S)
Power supply	12VDC, 24~48V PoE
Power consumption	<20W

### 产品规格

Working frequency	5.150GHz~5.850GHz
TX power	<29dBm(Based on region regulation)
Antenna gain	12dBi(L3)/18dBi(L8)/External antenna(-S)
Power supply	12VDC, 24~48V PoE
Power consumption	<20W

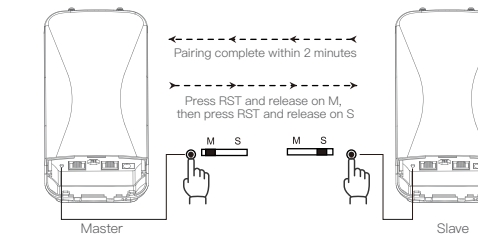
## Master and Slave Bridge Configuration

Set one bridge to Master by switching the button to M, another bridge to Slave by switching the button to S.



### Point to Point One–Key Pairing

Press Master bridge RST button for 1–3 seconds and release. In 1 minute press Slave bridge RST button for 1–3 seconds and release. Two bridges will pair in 2 minutes.



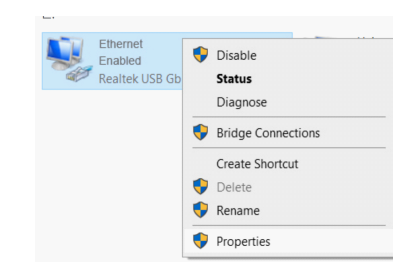
### Point to Multi-Point Pairing

Press Master bridge RST button for 1–3 seconds and release. In 1 minute press Slave bridge RST button for 1–3 seconds and release (repeat this operation to pair more Slave bridges ). Master and Slave bridges will pair in 2 minutes.

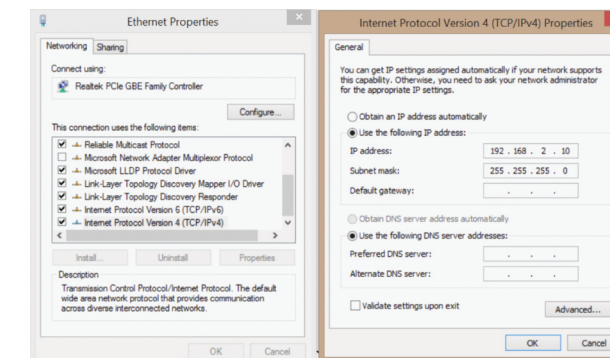
Remarks: When adding new Slave Bridge, current connection will disconnect

### Computer Configuration by Cable Connection

Set computer local network IP address to 192.168.2.X (X range: 11-200), keep same network segment as the bridge.



View Local Network Connection



Set computer IP address

# Operation Guide

## Step 1

Visit bridge default IP in browser to login page

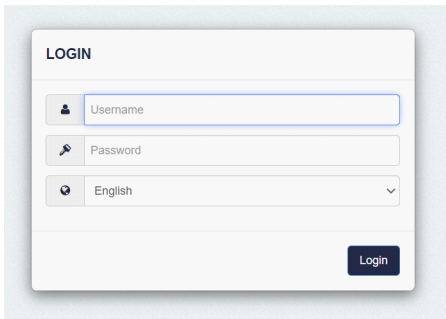


Figure 1-1

## Step 2

Input account and password to login. Home page as following.

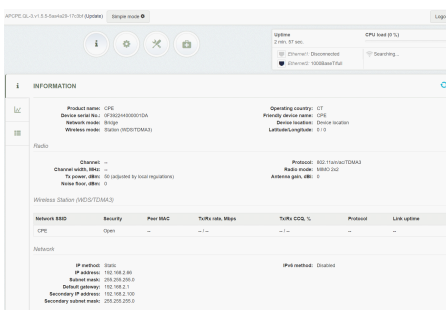


Figure 1-2

## Step 3

Choose “Settings>System configuration>Advanced settings”, disable “Hardware switch”.

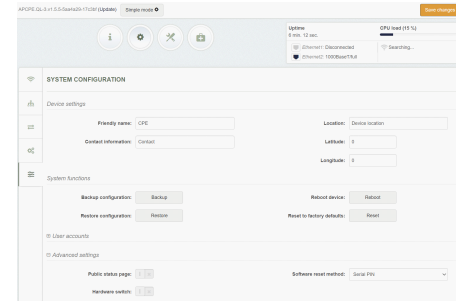


Figure 1-3

## Master Bridge Setting

### Step 4

Choose “Settings>Wireless configuration”. Set TX power, channel. Set Operation mode “Access point TDMA3” [Here are 4 modes: Access point (auto WDS)/ Access point (TDMA3)/Station (WDS/TDMA3)/Station (ARNPAT)].

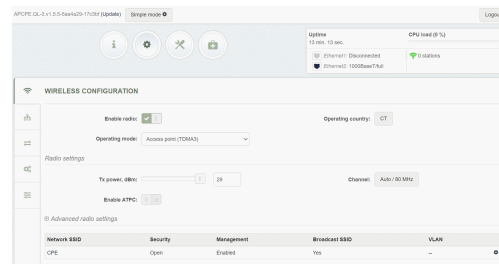


Figure 1-4

## Step 5

Click Network SSID name (For example: CPE), here will be popup page, finish all settings requested (SSID name, Security, password...), then “Done”.

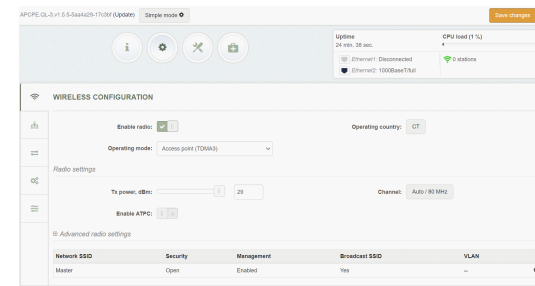


Figure 1-5

## Step 6

Click “Save changes” in the top right corner (figure 1-6). Confirm all settings, and save (figure 1-7).

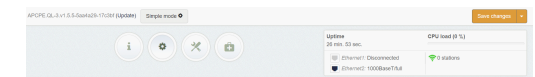


Figure 1-6

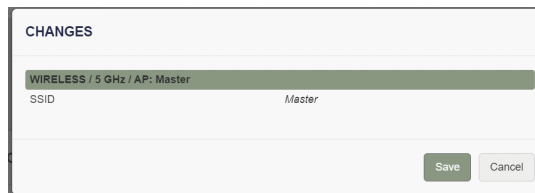


Figure 1-7

## Slave Bridge Setting

Repeat operation step 1~3, execute step 7.

## Step 7

Choose “Settings>Wireless configuration”. Set Operation mode “Station (WDS /TDMA3”, set TX power (figure1-8). Click SSID name (for example, CPE), search SSID and here will be popup page (figure 1-9), select Master bridge SSID (Master).

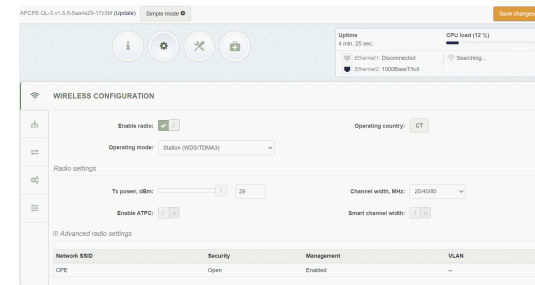


Figure 1-8

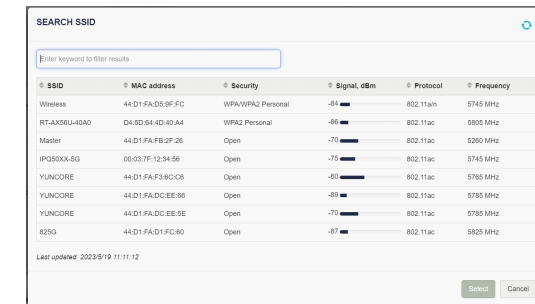


Figure 1-9

## Step 8

Select Master bridge SSID (Master in figure 1-9), will switch to new page (figure 1-10), choose security method and Master SSID password.

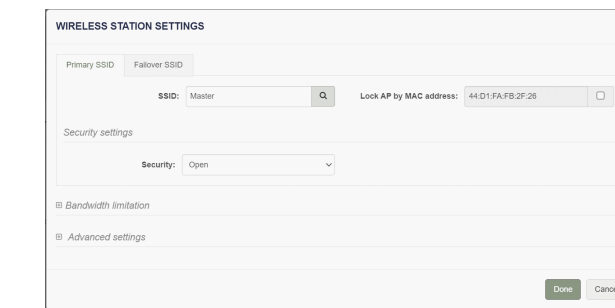


Figure 1-10

## Step 9

Click “Save changes” in the top right corner (figure 1-6). Confirm all settings, and save (figure 1-11, 1-12).

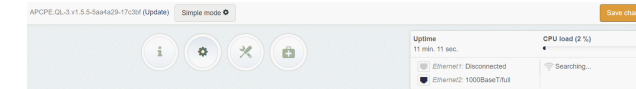


Figure 1-11

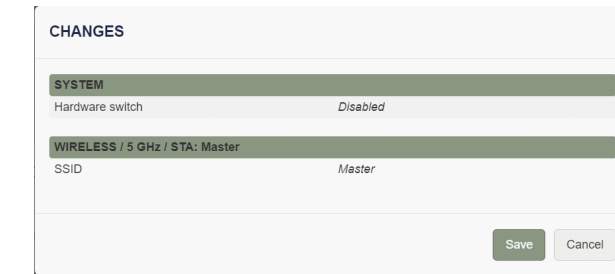


Figure 1-12

## Step 10

As shown in Figure 1-13, the signal strength can be seen in the upper right corner, which establishes a connection between the master and slave bridges.

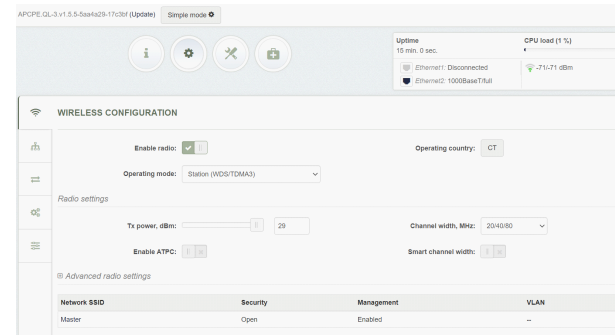


Figure 1-13